

# LAKE SUPERIOR VACATIONS





# TABLE OF CONTENTS

LAKE SUPERIOR

ADVENTURE

HISTORY, ARTS, & CULTURE

WHERE TO STAY



*Late Night Camp-fire, Two Harbors Minn.*





# LAKE SUPERIOR



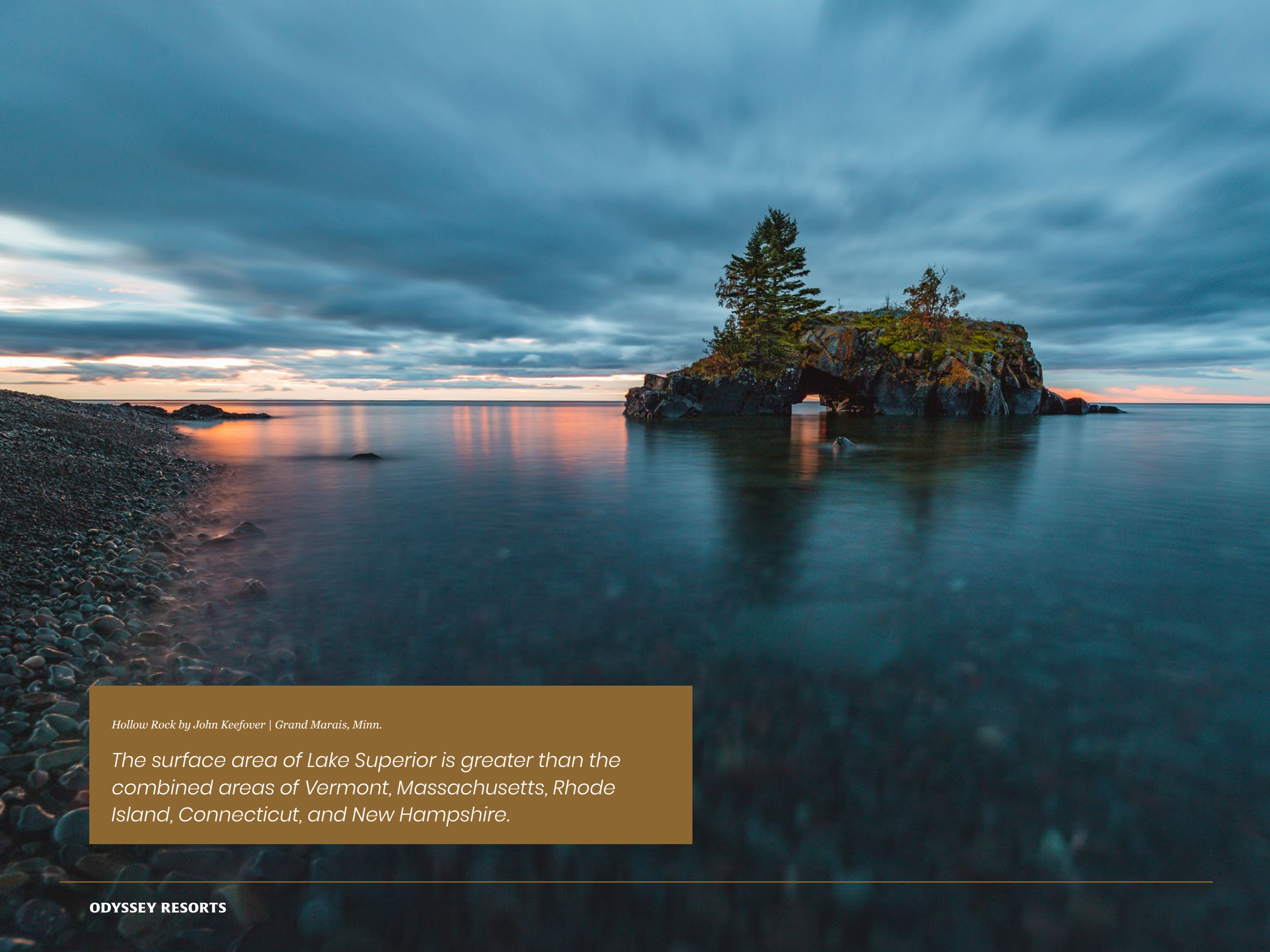




*Windmill Delivery by Dennis O'Hara | Lake Superior*

*Lake Superior could cover all of North  
America in water three feet deep.*

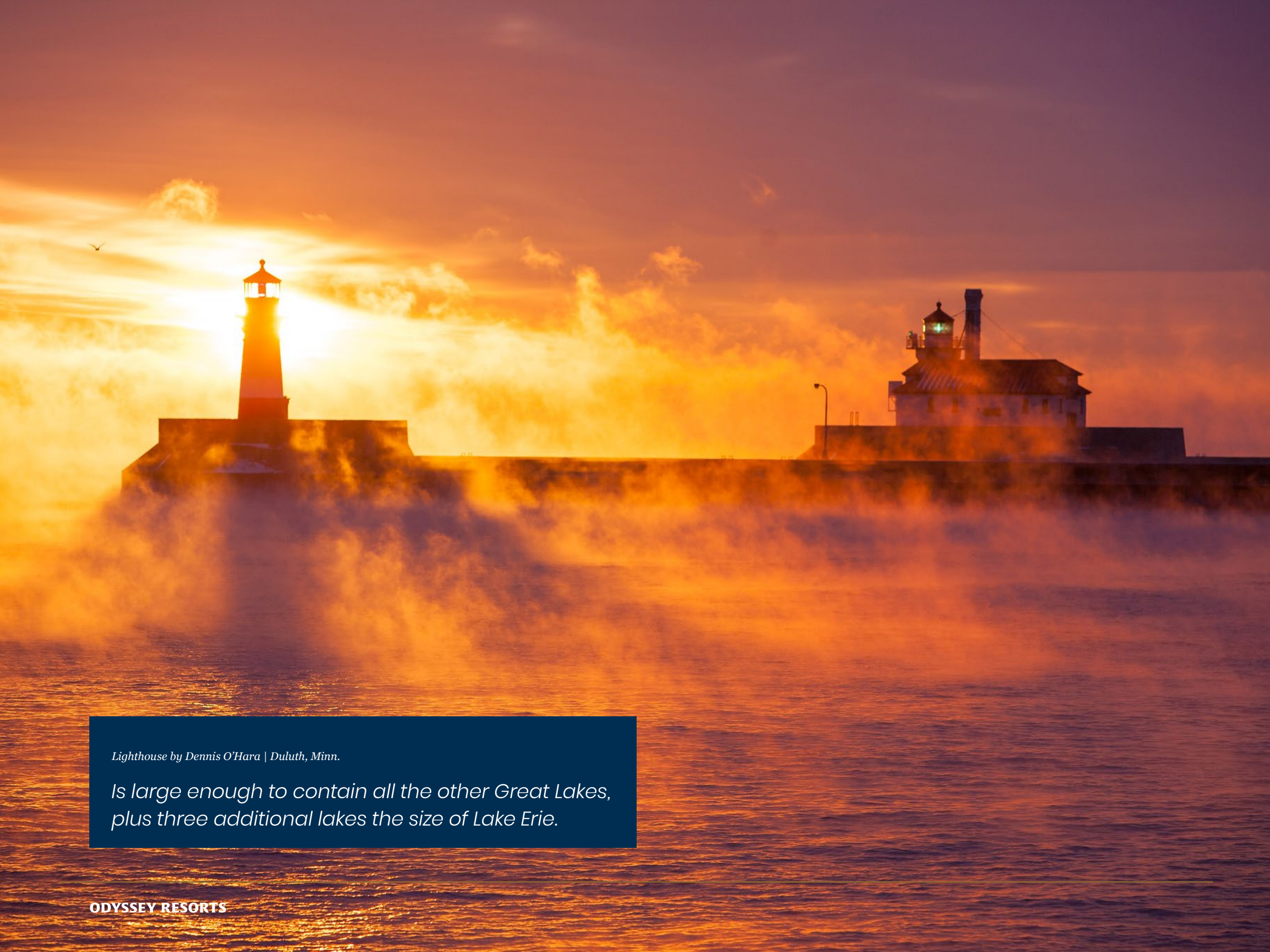




*Hollow Rock by John Keefover | Grand Marais, Minn.*

*The surface area of Lake Superior is greater than the combined areas of Vermont, Massachusetts, Rhode Island, Connecticut, and New Hampshire.*





*Lighthouse by Dennis O'Hara | Duluth, Minn.*

*Is large enough to contain all the other Great Lakes,  
plus three additional lakes the size of Lake Erie.*



*Surfing at Stoney Point | Duluth, Minn.*

*Just in case you want to go surfing in nearly frozen water - Lake Superior can help you hang ten.*





A photograph of an older woman with long, wavy grey hair, smiling and looking upwards. She is wearing a grey sweater over a black turtleneck and a necklace with a circular pendant. A black backpack strap is visible over her shoulder. In the background, a man with a beard and mustache is partially visible, looking in the same direction. The scene is set in a forest with green foliage. The word "ADVENTURE" is overlaid in white, bold, serif capital letters.

ADVENTURE



# TAKE A HIKE: A THOUSAND+ MILES OF TRAILS

## HIKING

---

**Superior Hiking Trail** 310 miles of adventure with convenient segments for people of all ability levels. [VISIT WEBSITE >>](#)

---

**State Parks** North shore state parks feature some of the most iconic vistas of the region. [VISIT WEBSITE >>](#)

---

## MOUNTAIN & FAT BIKING

---

**Duluth Traverse** Known to locals as “The DT,” this 85 mile trail (75% of which is single track) traverses the entire length of Duluth. [VISIT WEBSITE >>](#)

---

**Lake County Demonstration Forest** This 400 acre multiple-use forest lands are valued as habitat for wildlife; and for cultural, aesthetic, and *FAT BIKE TRAILS!* Groomed in the winter and open all year. [VISIT WEBSITE >>](#)

---

**Cook County Bike Trails** Cook County is one of Minnesota’s fastest growing mountain bike destinations and home to several annual races including the Lutsen 99er and Norpine Classic. [VISIT WEBSITE >>](#)

---

## ROAD BIKING

---

**Gitchi-Gami State Trail** This beautiful paved trail runs along Lake Superior, and will one day traverse the entire north shore. Currently 29 stunning miles of trail await you with new segments being added each year. [VISIT WEBSITE >>](#)

---



*Lake Superior Overlook | Duluth, Minn.*

## SNOWMOBILING

---

**C.J. Ramstead State Trail** 146 miles of natural surface trail from Duluth to Grand Marais. The trail winds its way through the forests on the ridgeline overlooking Lake Superior, and provides access to some of the most rugged and beautiful scenery in Minnesota. [VISIT WEBSITE >>](#)

---

## CROSS COUNTRY SKIING

---

**Norpine Trails** 65+ miles of groomed trails in Grand Marais and loaded with Lake Superior vistas. [VISIT WEBSITE >>](#)

---

**Korkki Nordic** Korkki Nordic has been a legendary and much-loved part of the Duluth-area cross-country ski scene for over fifty years. [VISIT WEBSITE >>](#)

---



# CHASE WATERFALLS

The north shore of Lake Superior is home to hundreds of epic waterfalls. So many, in fact, that we have our own Waterfall Season. Every Spring, when the snow melts, the rivers rise, and the waterfalls are simply spectacular.

Of course, they're fantastic year-round. But if you have a chance to visit in the Spring, be sure to check out Gooseberry and Pigeon Falls.



*Middle Falls | Gooseberry Falls State Park, Minn.*

## FAN FAVORITE FALLS

---

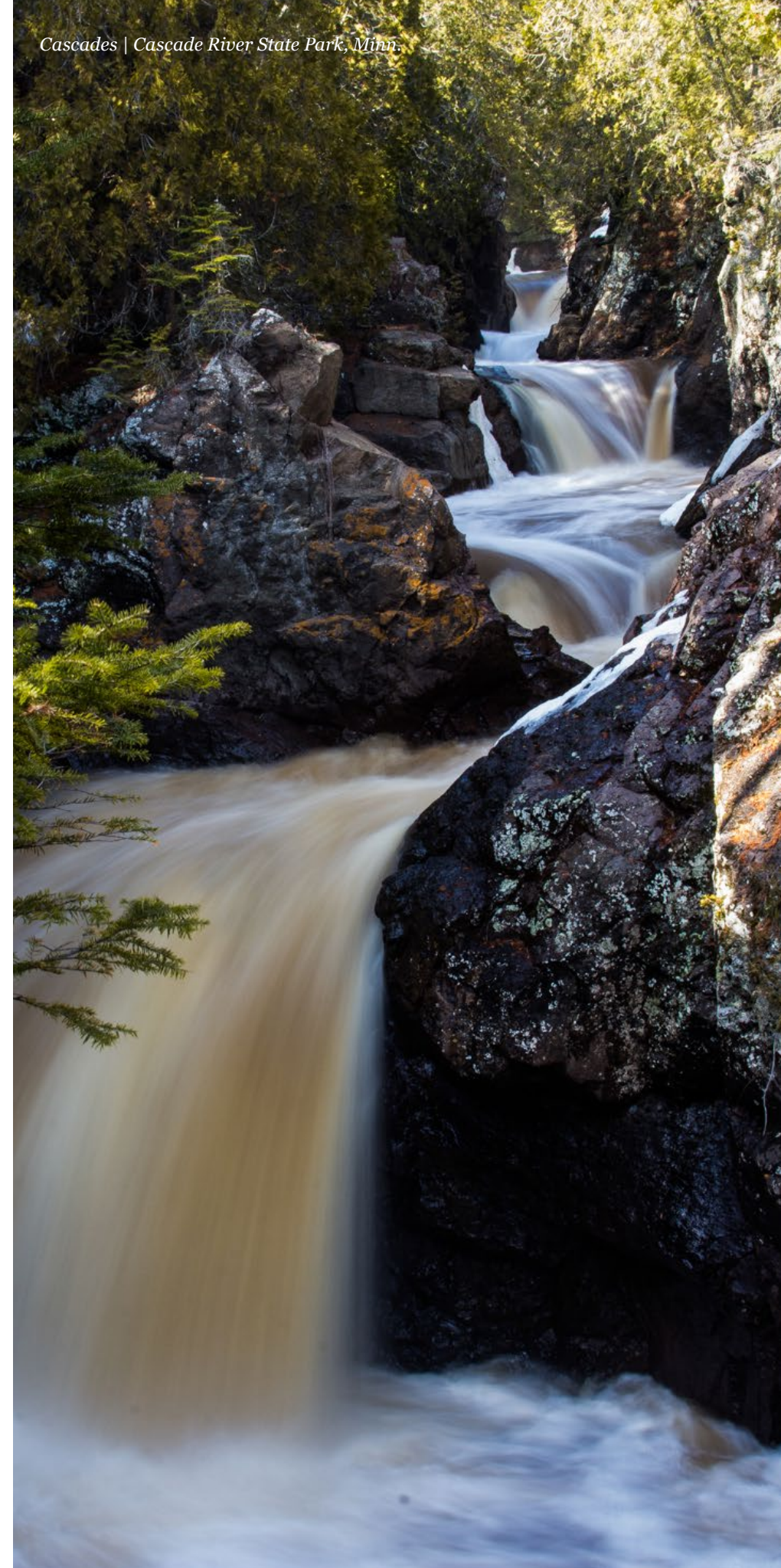
**Gooseberry Falls** This is the most visited state park in Minnesota for a reason. The upper, lower and middle falls are incredibly Instagram-worthy and an easy hike from the parking lot.

**Pigeon River High Falls** The tallest waterfall (950 feet!) in Minnesota pours over the Canadian border, and is another easy hike in.

[SEE MORE EPIC LAKE SUPERIOR WATERFALLS >>](#)

---

**ODYSSEY RESORTS**







# DROP A LINE

## DEEP (INLAND) SEA FISHING

---

With the largest freshwater lake and several rivers right outside your door, our North Shore resorts are an angler's dream. We can't guarantee you'll catch a giant, but we know you'll have fun trying.

*State Record fish, caught in lake superior*

**Chinook Salmon** 33 pounds 4 oz Lake Superior, near Duluth

**Coho Salmon** 10 pounds 6.5 oz Lake Superior, northeast of Two Harbors

**Lake Trout** 43 pounds 8 oz Lake Superior, Hovland

**Brown Trout** 16 pounds 12 oz Lake Superior, northeast of Two Harbors

## BOUNDARY WATERS CANOE AREA (BWCA)

---

Minnesota is home to the BWCA a popular destination for anglers and campers from around the world. It's an excellent destination for a day of fishing. Interested? Ask us about boat and canoe rental options.

## FLY FISHING IN LAKE SUPERIOR RIVERS AND STREAMS

---

Over 300 streams and rivers flow into Lake Superior and many of them are full of trout just waiting to be caught.

*Add a guided fishing adventure to your vacation!*



# HIT THE LINKS

## SUPERIOR NATIONAL AT LUTSEN

Superior National is a public golf course offering 27 holes of spectacular resort golf. Unbelievable vistas of Lake Superior and other natural features can be seen as you play around the course.

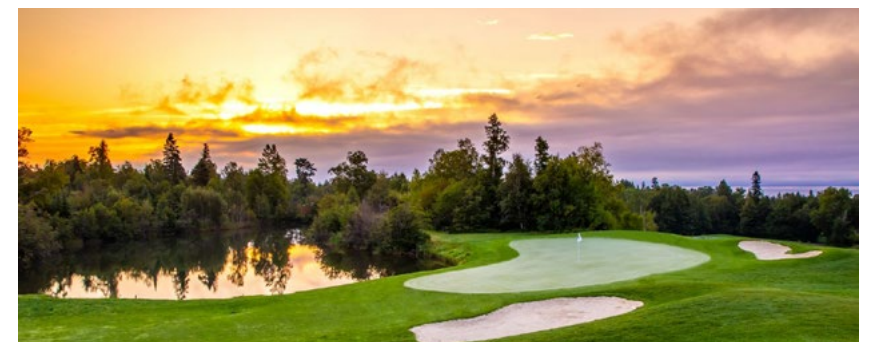
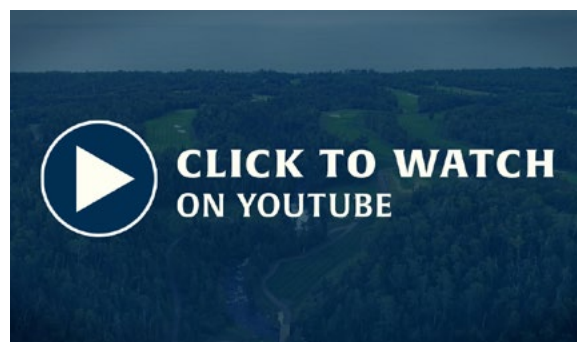
Perfect for scratch players, beginners, and everyone in between, everyone is welcome and encouraged to come play a round or two!

[VISIT WEBSITE >>](#)

Play in the natural setting of Lake Superior's Sawtooth Mountains with unbelievable vistas of Lake Superior.

**27 Holes** Premier 18, River 9, Canyon 9, Mountain 9

**Footgolf**



ODYSSEY RESORTS



# ALPINE SKIING

## LUTSEN MOUNTAINS LUTSEN *(pictured)*

---

**95 Runs | 825' Vertical Drop | Longest Run: 6580'**

With nearly a hundred runs across four mountains Lutsen is home to the largest, and tallest ski area in Minnesota. *By far!*

In addition to the state's best skiing you'll also experience unparalleled Lake Superior views as you ski or board down the mountain.

*Lutsen Mountains welcomes Adaptive Skiers.*

**VISIT WEBSITE >>**

## SPIRIT MOUNTAIN DULUTH

---

**22 Runs | 700' Vertical Drop | Longest Run: 5400'**

Home to the Midwest's largest terrain park and 22 runs Spirit Mountain is a popular spot for locals and tourists alike.

Outside Magazine votes Duluth the Best Outdoor City in America in 2014 and at Spirit Mountain you can enjoy all this outdoor city has to offer: hiking, biking, skiing, riding and indulging in Duluth!

**VISIT WEBSITE >>**







# HISTORY, ARTS, & CULTURE

ST. PAUL & DULUTH RAILROAD SLIPS Nos. 1 & 2, DULUTH HARBOR.



# MUSEUMS

## DULUTH

---



**Glensheen Mansion** Come see why Glensheen Mansion is the most visited historic home in Minnesota. The 12-acre estate features gardens, bridges, and the famous 39-room mansion built with remarkable 20th-century craftsmanship, telling the story of the Duluth region. [VISIT WEBSITE >>](#)

---

**Lake Superior Railroad Museum** Explore the impressive collection of historic railroad equipment that built Minnesota and our country. From immaculately restored locomotives and rolling stock, to exciting events and exhibits, in an effort to preserve, present, and interpret the history of railroading, especially as it relates to the area. [VISIT WEBSITE >>](#)

---

**Lake Superior Maritime Museum** This museum offers a fantastic voyage into the history of our Great Lakes. Exhibits are updated frequently offering visitors a unique experience each time they attend. [VISIT WEBSITE >>](#)

---

## TWO HARBORS

---

**3M Birthplace Museum** This museum pays homage to the early days of the company that would go on to define the business model of research and development and become a global force employing over 88,000 people worldwide with annual sales of over 30 billion dollars. [VISIT WEBSITE >>](#)

---

**Two Harbors Lighthouse Museum** The Two Harbors Light Station is the oldest continuously operating lighthouse on Minnesota's North Shore. Make time to stop in for a tour on your vacation. [VIDEO TOUR >>](#)

---

**Cook County Bike Trails** Cook County is one of Minnesota's fastest growing mountain bike destination and home to several annual races including the Lutsen 99er and Norpine Classic. [VISIT WEBSITE >>](#)

---

## LUTSEN/TOFTE

---

**North Shore Commercial Fishing Museum** The museum is dedicated to the collection, preservation and dissemination of historical knowledge with specific emphasis on commercial fishing and the more general relationship of early lifestyles to the shore and waters of Lake Superior. [VISIT WEBSITE >>](#)

---

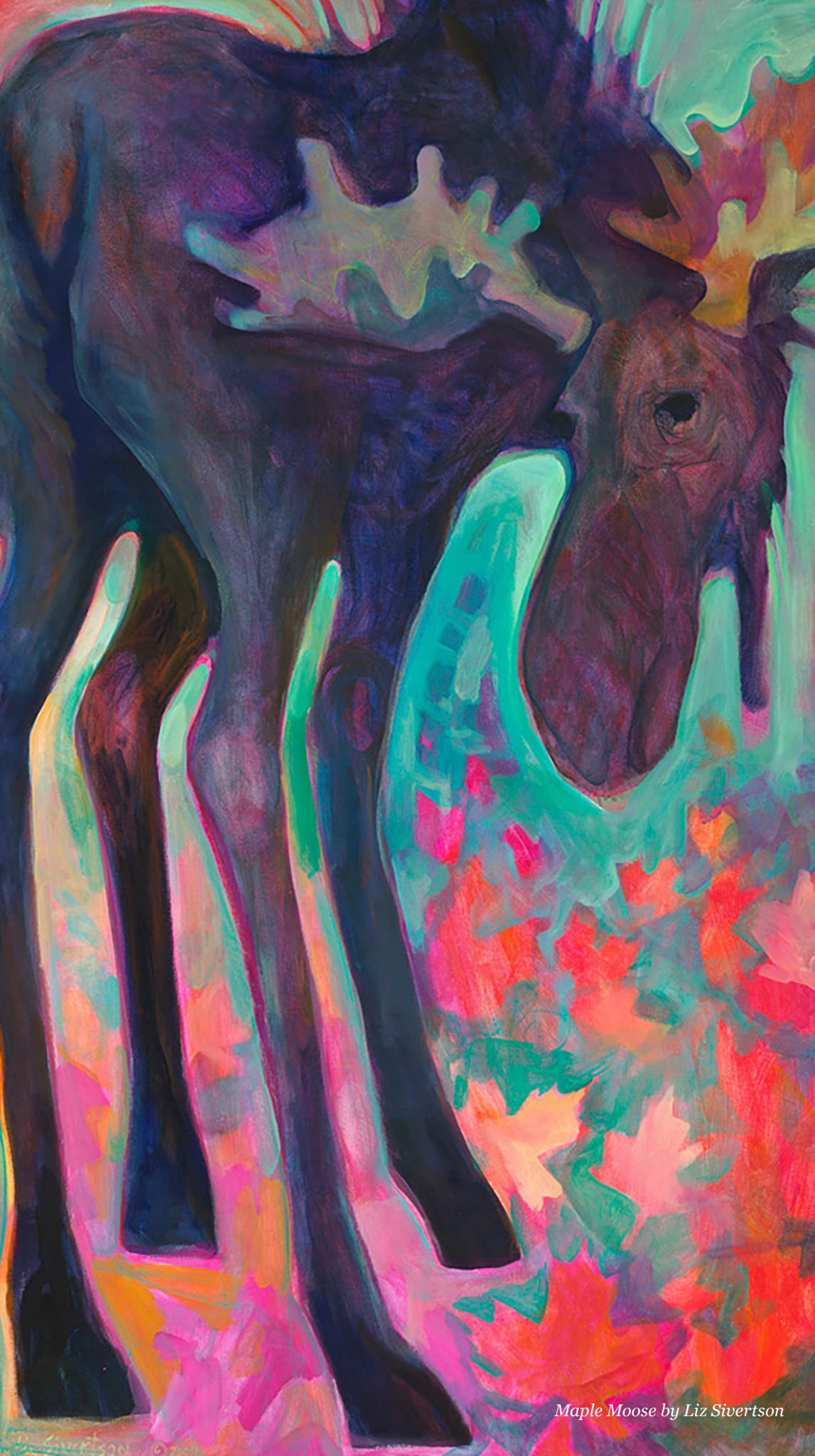
## GRAND MARAIS

---

**Chick-Wauk Museum** Chik-Wauk Museum presents the cultural history of the Gunflint Trail with a variety of cool exhibits. [VISIT WEBSITE >>](#)

---





Maple Moose by Liz Sivertson

# SUPERIOR ART

## GALLERIES & STUDIOS

---

**Sivertson Galleries** You can find a Sivertson gallery in both Duluth and Grand Marais. Here you'll find paintings, photography, jewelry and sculpture from the region's most celebrated artists. [VISIT WEBSITE >>](#)

---

**Tweed Museum of Art** With a permanent collection of over 10,000 art objects representing a range of cultures and periods of art history, the Tweed Museum of Art on the campus of the University of Minnesota Duluth is a major cultural and educational resource for the Upper Midwest. [VISIT WEBSITE >>](#)

---

**Betsy Bowen Studio** Betsy makes woodblock prints by hand, pictures of recognizable scenes mostly from the northwoods. The printmaking studio and gallery is housed in a historic church, selling the current editions of hand-printed woodcuts, as well as the work of local and regional artists. [VISIT WEBSITE >>](#)

---

## EDUCATION

---

**Grand Marais Art Colony** The Grand Marais Art Colony provides services to artists, promotes art education and nurtures art in their community. They offer classes and events for youth and adults alike. [VISIT WEBSITE >>](#)

---

**North House Folk School** Founded in 1997 by a small handful of inspired locals passionate about traditional craft and cooperative learning. North House offers a variety of classes on art and traditional crafts.

[VISIT WEBSITE >>](#)

---

**Duluth Folk School** A blend of traditional skills and tools with modern day tools and techniques to deliver fantastic, fun classes. [VISIT WEBSITE >>](#)

---

---

## ODYSSEY RESORTS



# THEATRE

## DULUTH

---

**Norshor Theater** At center stage in downtown Duluth's Historic Arts and Theater (HART) District, the restored NorShor Theatre is bringing new productions and new possibilities to the region. [VISIT WEBSITE >>](#)

---

**Zeitgeist Teatro** This downtown, Duluth, theater is home to the Renegade Theater Company who produces a full mainstage season and weekly improv performances every Friday and Saturday night. [VISIT WEBSITE >>](#)

---

**The Duluth Playhouse** The playhouse brings exceptional live theatrical entertainment for theatre-goers of all kinds, from musicals to comedies to dramas to original works. [VISIT WEBSITE >>](#)

---

## GRAND MARAIS

---

**Grand Marais Playhouse** Grand Marais Playhouse is a non-profit community theater dedicated to providing high quality theater and educational opportunities with and for Cook County residents and visitors. [VISIT WEBSITE >>](#)

---

*Norshore Stage by Dennis O'Hara | Duluth, Minn.*





A warm and inviting living room with a high, wood-paneled ceiling and a large, multi-paned window offering a view of a forested landscape. The room features a large stone fireplace with a wood-burning stove, a leather armchair set, and a red sofa. A ceiling fan with a light fixture is visible. The text "WHERE TO STAY" is overlaid in the center.

WHERE TO STAY



# BEACON POINTE DULUTH



## LAKE SIDE CONDOS

*One-, Two- and Three-Bedroom  
Condos with extraordinary Lake  
Superior views await you in Duluth,  
Minnesota.*

Near Canal Park

On the famous Lake Walk

Heated underground parking





# LARSMONT COTTAGES TWO HARBORS



## INSPIRED COTTAGES

—  
*Lakeside perfection.*  
*Scandinavian inspired design.*  
—

- 1300' of Lake Superior shoreline
- On-site restaurant
- Lakeside massage cottage





# BREEZY POINT CABINS TWO HARBORS



## LAKE EFFECT

*The visceral attraction  
to fresh water.*

*Stunning views.  
Every sense triggered.*

Twelve pristine cabins

Timeless setting

Fully renewed in 2016





# GRAND SUPERIOR GOOSEBERRY FALLS



## LOG CABIN LIFE

—  
*Classic*  
*“Northern Minnesota”*  
—

Log cabins, lake homes, and lodge

On-site restaurant

2-miles from Gooseberry Falls

Dog-friendly





# CARIBOU HIGHLANDS LUTSEN



## LAND OF ADVENTURE

*Caribou Highlands is the capitol of North Shore adventure.*

on Lutsen Mountains

Start and finish of the Lutsen 99er  
& Superior Trail Races

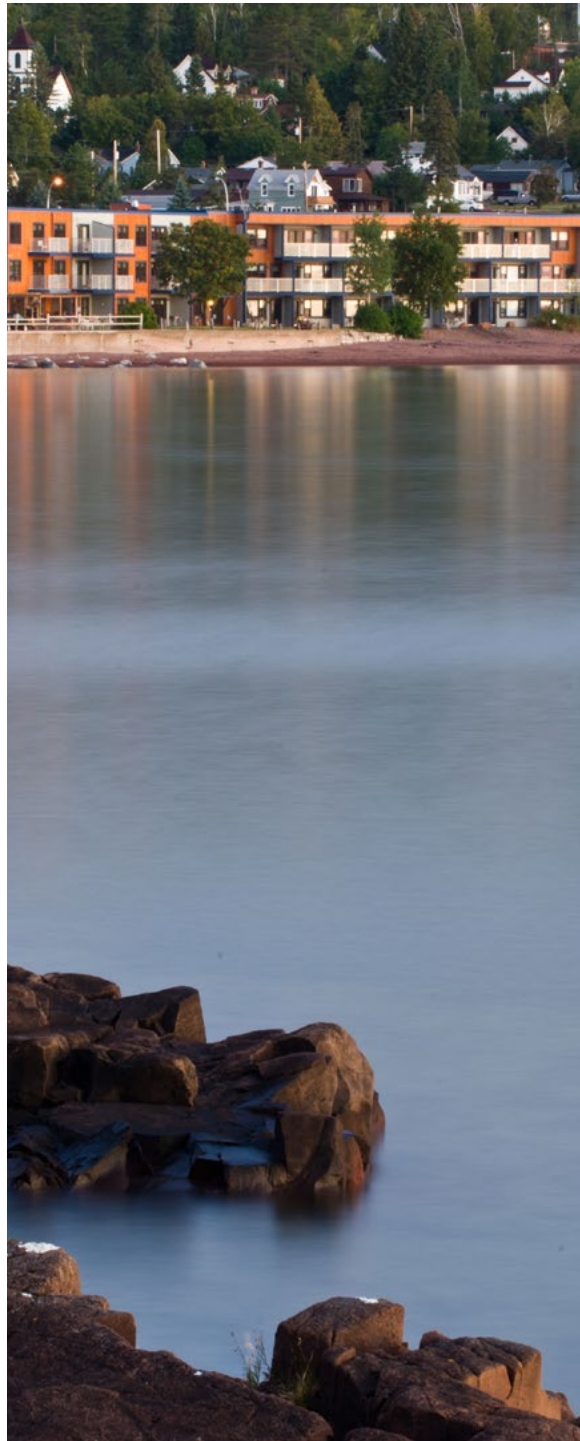
On-site bar and restaurant

Dog-friendly





# EAST BAY SUITES GRAND MARAIS



## POOCH PARADISE

*The perfect pet-friendly blend of  
outdoor recreation, unique shopping  
and culture.*

On the beach

Just a block from downtown  
and the World's Best Donuts

Dog-friendly







Wherever the North Shore takes you, we're there.